



SUN ERGOLINE, A DIVISION OF JK PRODUCTS & SERVICES, INC. · 1 Walter Kratz Drive · Jonesboro, AR 72401
Phone: 888.771.0996 · Fax: 870.935.3618 · E-mail: ergoline@sunergoline.com · Website: www.sunergoline.com

Ergoline

0070823501



TAN WITH CONFIDENCE!





TAN WITH CONFIDENCE!

■ VIRTUALLY ELIMINATES OVER-EXPOSURE

The intelligent SUN ANGEL sensor takes seconds to measure your skin's current UV light sensitivity, reducing the possibility of getting a sunburn.

■ SENSOR-CONTROLLED UV OUTPUT

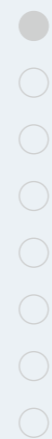
The SUN ANGEL uses the measurement data to calculate a personalized tanning session that gives you an appropriate dose of UV light.

■ VARIABLE UV SPECTRUM

Unlike natural sunlight, the SUN ANGEL emits an individual and personalized UV spectrum. Intelligently blending UV-A and UV-B makes better use of those UV light frequencies that give you that sumptuous tan. The SUN ANGEL is never more powerful than natural sunlight.

■ INDIVIDUAL TANNING

You will always have that perfect tan because the SUN ANGEL gives you just the right amount of UV light. Your skin's resistance to UV light will increase after each SUN ANGEL session and the UV dosage will gradually increase, as appropriate, to match.



A SUNNY FUTURE

■ HOW CAN I PLAN FOR A SUCCESSFUL TANNING SALON BUSINESS?

Dear tanning professional,

Ergoline, the world-wide market leader in professional sunbeds, has developed a new sunbed that gives your customers an excellent tan while virtually eliminating the possibility of overexposure. The new SUN ANGEL is a truly innovative tanning bed with a variable UV spectrum and sensor-controlled tanning.

The SUN ANGEL is Ergoline's promise of quality to your customers, with custom UV lamps specifically matched to one another. However, the SUN ANGEL goes beyond new technology.

The high-profile design and a complete marketing package will not only captivate your existing customers, but also attract new ones.

Furthermore, the SUN ANGEL is a tough act to beat in terms of service, warranty and financing. Find out for yourself! The following pages show you the many ways in which the new Ergoline SUN ANGEL conclusively addresses those issues that are so important to your business.

Sincerely,
Your Ergoline Team

- How do I benefit from new trends?
- Which UV technologies will be setting the trend for the future?
- How do I address my customer's individual requirements?
- How important is sunbed design?
- How can I ensure thorough customer satisfaction?





INCREASED PROFIT POTENTIAL

■ HOW CAN I BENEFIT FROM MODERN TRENDS?

The desire for an attractive tan is as strong as ever. And customers are getting more and more discerning. Therefore, providing the right service to your customers is critical for any salon.

The new Ergoline SUN ANGEL ensures excellent tanning results while virtually eliminating the possibility of overexposure. Tanning clients will get just the right amount of UV light necessary for a perfect-looking tan.

Naturally, the SUN ANGEL is German engineered and sets new standards of tanning technology in the world.

The SUN ANGEL is not only a persuasive option for your existing customers, but also for all the potential clients that desire a natural-looking tan but are concerned about getting a sunburn. For this group of individuals, the SUN ANGEL is exactly what they've been looking for!

Just imagine how this new customer group can increase your profits!





SIMPLY TANNING WITH CONFIDENCE

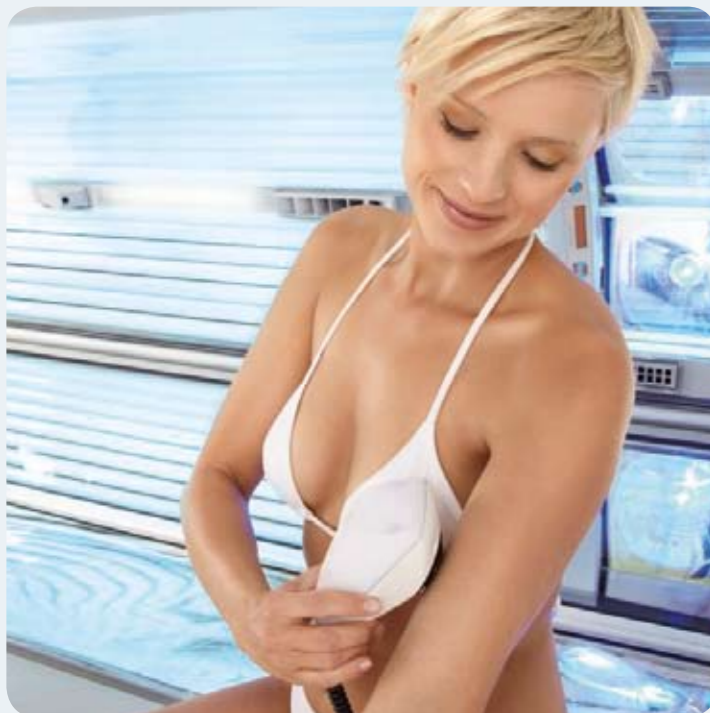
■ WHICH UV TECHNOLOGIES WILL DECIDE THE FUTURE?

Unlike the sun's rays, the SUN ANGEL emits a custom UV spectrum. Intelligently blending UV-A and UV-B makes better use of the UV rays to give you that perfect tan, while virtually eliminating the possibility of overexposure. The SUN ANGEL is never more intense than natural sunlight.

Three factors play a crucial role in the tanning performance that the SUN ANGEL offers with its variable UV spectrum. Existing skin pigment tans more rapidly and the tanning effect happens sooner than it does on conventional sunbeds. In addition, the SUN ANGEL generates new pigment more rapidly. The twenty-minute tanning session is optimized for maximum pigmentation.

The skin's own light resistance increases with each session and the UV dosage can be gradually increased for an attractive, long-lasting tan. Apart from a sumptuous tan, the SUN ANGEL activates vitamin D3 synthesis, which the human body also produces when exposed to natural sunlight.





EXTREMELY SENSITIVE

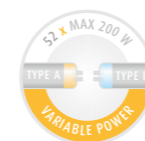
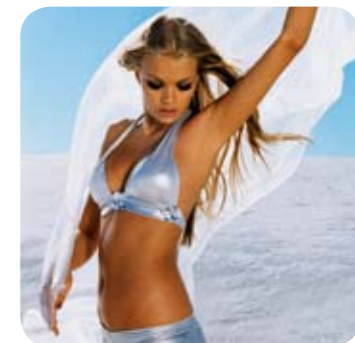
■ HOW DO I RESPOND TO MY CUSTOMER'S INDIVIDUAL NEEDS?

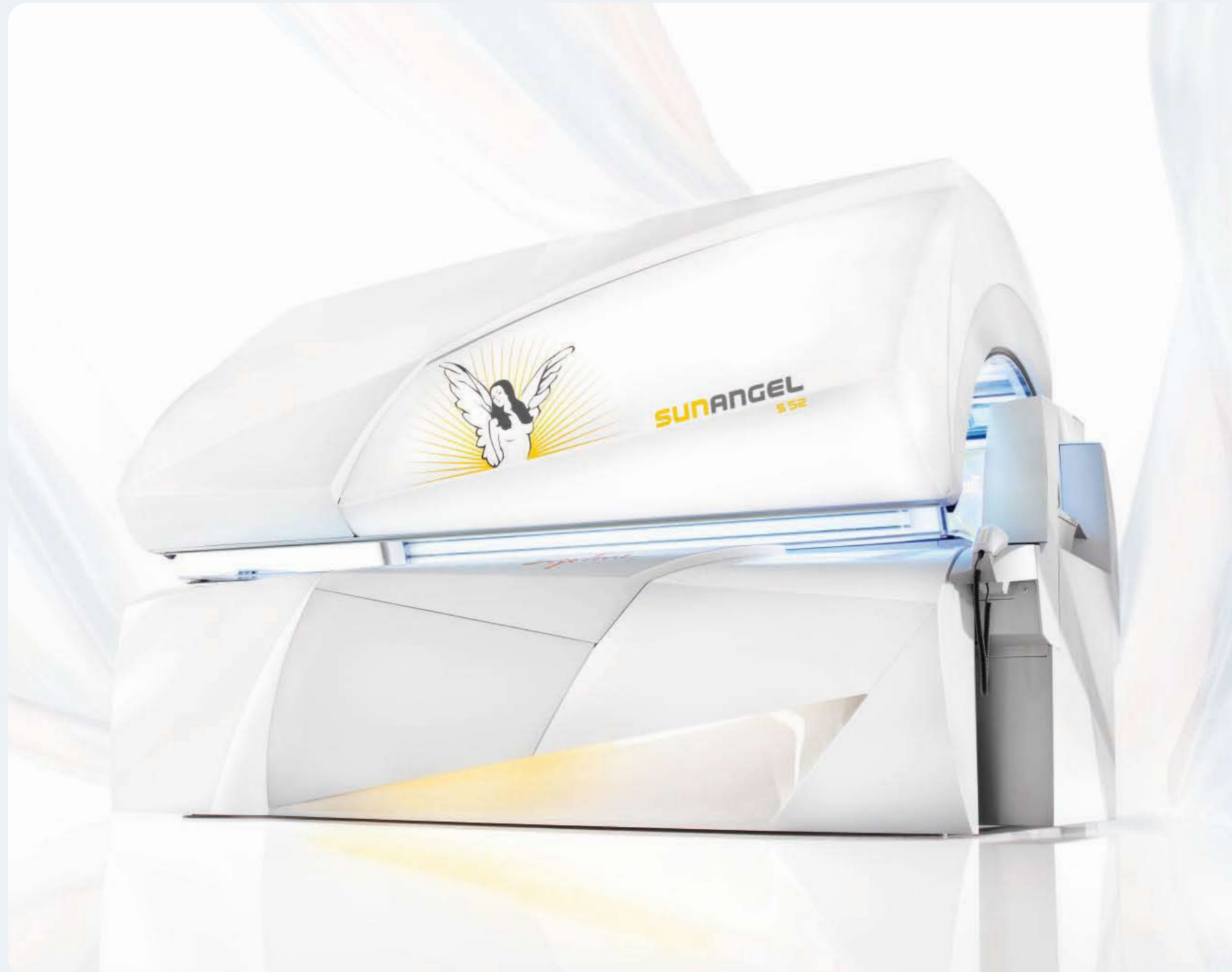
The Ergoline SUN ANGEL knows just how much UV light is necessary for a perfect-looking tan. Your individual UV light requirement depends not only on skin type, but also if your skin has an existing tan.

The SUN ANGEL sensor provides the key to a personalized tanning experience.

This precision photoelectric sensor gives you an exact analysis of your skin tone – from the first measurement on the forehead to the second on the lightest skin being tanned. The SUN ANGEL uses these results to calculate a specific and personal tanning session that emits the correct dose of UV light necessary for your customers to get a great tan.

The variable UV spectrum combination specifically matched to the skin gives your customers a more rapid tan than conventional sunbeds – and at the same time virtually eliminates the possibility of overexposure.





BEAUTY WITH A GENTLE AURA

■ HOW IMPORTANT IS SUNBED DESIGN?

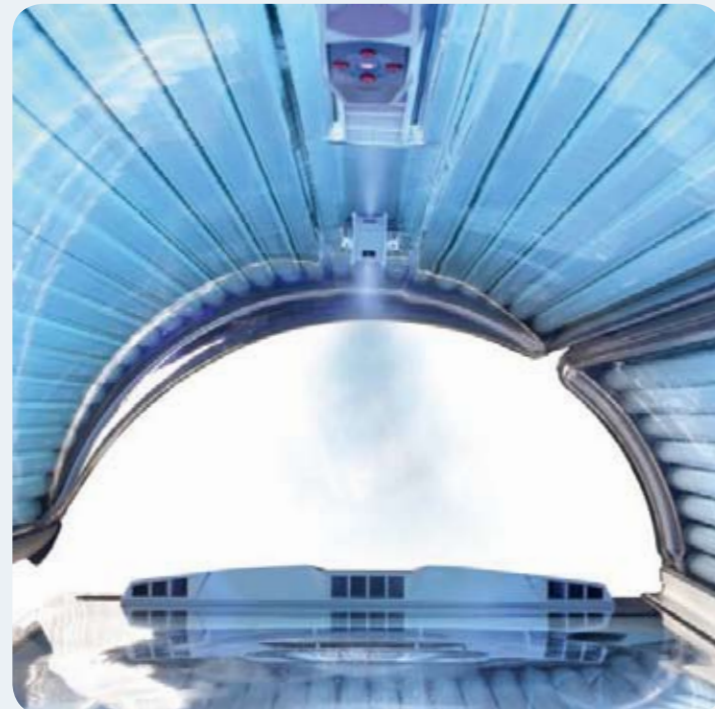
First impressions always count the most – and it will be love at first sight with the SUN ANGEL! Clear design, sparkling white finish and bright yellow Mood Lights give it a magnetic attraction. The soft colors and curves create an aura of beauty and confidence. Your customers will hardly be able to resist the temptation!

The SUN ANGEL is simply a tanning experience beyond comparison. Plus, the innovative design is more than just skin deep as it continues inside.

During the tanning session, your customers will also notice that the SUN ANGEL is different from traditional tanning beds. The soft, sky-blue UV light conveys an especially pleasant feeling.

Once you have explained the SUN ANGEL'S unique qualities, even those potential, but undecided customers will see tanning in a new light.





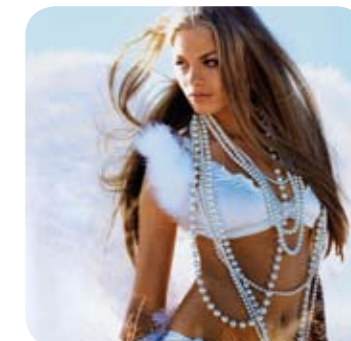
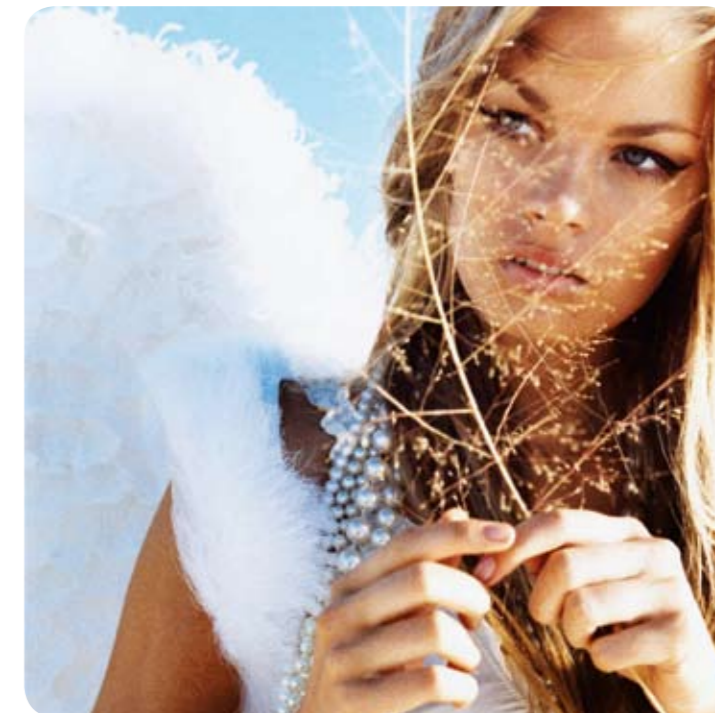
HEAVENLY SENSATIONS

■ HOW CAN I ENSURE 100 % CUSTOMER SATISFACTION?

The SUN ANGEL turns any tanning session into a heavenly experience. Ergoline has thought of everything that makes tanning a pleasant and memorable event. The extra-wide Multi Relax base acrylic with its integrated headrest, relaxing armrests and variable footrests as well as a spacious tanning tunnel allows clients of all sizes to find a completely comfortable position with plenty of room for movement.

Just like in luxury cars, your customers can set their ideal temperature, which is kept constant throughout the tanning session by a climate control system. Using the Temptronic function, the temperature can be adjusted in two-degree increments ranging from 64° to 86° Fahrenheit. The Aqua Mist & Aroma feature ensures an extremely refreshing experience by dispensing a super-fine mist in selectable intervals over the face and body.

For audiophiles, the 3D-Sound system with integrated subwoofer creates a concert hall feeling while the MP3 dock-in and SD card slot provide a completely personal listening experience. The user-friendly control panel, with its clear symbols and large display, makes it easy for your customers to understand all the features of the SUN ANGEL and there is also a Voice Guide to explain each function.





VARIABLE POWER	
LAMPS	WATTS
52	200 MAX
FT	WATTS
4/3	420 MAX / 8
ST	WATTS
2	240



SPECIFICATIONS
• Optional exhaust plenum
• Total power consumption (in watts): 17,800
• Electrical requirements: 230V 30 or 230V 10
• Circuit breaker recommended: 60A / 3-pole 30 or 100A / 2-pole 10
• Number of wires required: 4 30 or 3 10
• Weight (in lbs): 1,500
• Dimensions closed (L x W x H in inches): 94 x 63 x 61
• Dimensions open (H in inches): 79
• Recommended room size (in feet): 10 x 9

NOTE

The information contained herein is the copyrighted property of JK Products & Services, Inc. No person, firm, corporation or entity is authorized to reproduce or transmit this material or any portion thereof without the expressed written permission and consent of JK Products & Services, Inc.

JK Products & Services, Inc. makes no guarantees on income, return on investment, market conditions, performance, etc. with any undertaking using its products and services. Past performance is not indicative of future results.

Notice: Read the mandatory FDA warning label found on every tanning machine for important information on potential eye injury, skin cancer, skin aging and photosensitive reaction and proper use. Compliant protective eyewear must be worn when using any indoor tanning system or device.

POWER

- SUN ANGEL SENSOR
- 52 x MAX 200 W VARIABLE POWER
- 4 x MAX 420 W ULTRA PERFORMANCE
- 2 x MAX 240 W SHOULDER TANNER
- REFLECTOR NECK TANNER

• The SUN ANGEL sensor for personalized UV power with automatic calibration

• Ergoline Variable Power (200W max)

• Ultra Performance glass reflector system plus extra UV-B lamps

• Facial tanner output adjustment (incl. OFF): automatic with 4 manual settings

DESIGN

- MOOD LIGHTING

• Décor color: Angel White

• Chassis color: Brilliant Silver

• Mood lights

• Interior lighting

• Base panel lighting

COMFORT

- MULTI RELAX
- COMFORT COOLING
- TEMPTRONIC
- AQUA MIST & AROMA
- 3D-SOUND
- MP3 DOCK-IN
- SD CARD SLOT

• Separate air-conditioned base acrylic cooling

• 2-system body ventilation, separately adjustable and additional face ventilation with temperature controlled by Temptronic

• Aqua Mist & Aroma

• 3D-Sound system with MP3 dock-in, SD card slot, headphone connection socket, channel selector and volume control

OPERATION

- VOICE GUIDE
- IR FUNCTION

• Control panel with 32-field LED display

• Control grip for individual comfort settings

• Voice-assisted service and diagnostic support

• Check control for diagnosing main alert messages

• Automatic reset function after tanning session

The SUN ANGEL is:

- ETL listed
- Tested to UL and CSA Standard ANSI/UL 482 CAN/CSA-C22.2 No. 224-M89
- FDA listed
- Radio interference suppressed and compensated

© 2008 JK Products & Services, Inc. reserves the right to change product designs, features, specifications, etc. without notice.